

SAN/Omni Control Technologies

BENEFITS

Long Lifetime

More than 15,000 installations in the rugged railway environment that have been proven in all climates and weather conditions.

Warranty

A 10 year warranty is available for heaters with a Monel Sheath and a 3 year warranty is available for Stainless Steel heaters.

Easy Installation

Specially engineered kick-on Stainless Steel clips make for easy installation while saving time.

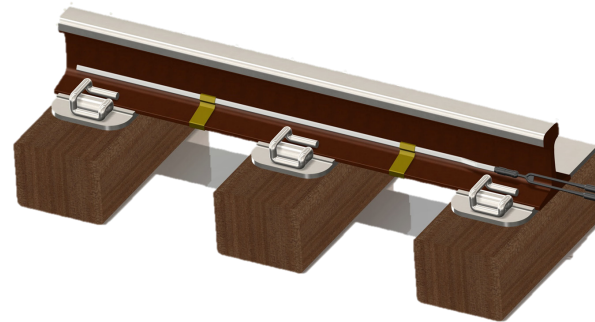
Energy-Saving

Created for switch and stock rail, the flat heater profile allows for 40% contact with the rail, in contrast with 15% of a tubular heater.

Switch Point Heaters & Covers

San Electro Heat and Omni Control Technologies manufacture and produce robust flat switch heating elements that are then tailored to the needs of the rail customer. This customization involves the packaging, termination, and connectorization of the heaters being produced. This partnership optimizes and focuses the experience and technology from Europe and places it in the hands of a seasoned U.S. rail manufacturer.

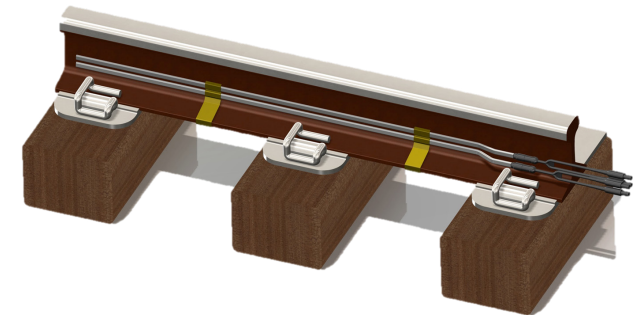
SINGLE ELEMENT



The single element flat switch point heater allows for maximum energy efficiency.

- Monel 400 or SS Sheathing
- 100 W/ft. to 300 W/ft.
- Single SS Spring Clip (kick-on)
- 4ft. - 24ft. Length

DUAL ELEMENT



The double element flat switch point heater allows for maximum heat with a redundant path.

- Monel 400 or SS Sheathing
- 100 W/ft. to 600 W/ft.
- Double SS Spring Clip (kick-on)
- 4ft. - 24ft. Length

SAN®

Electro Heat

1 Main St. Whitinsville, MA 01588. Phone: +1 917-806-9650. www.niberailsolutions.com - info@niberailsolutions.com



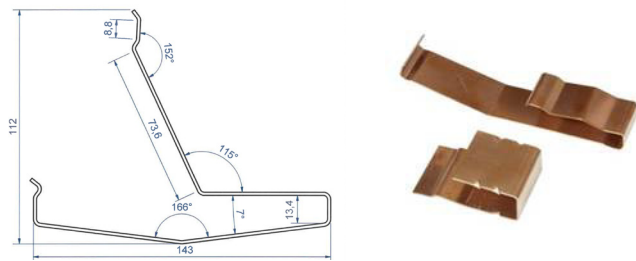
Switch Point Heaters & Covers

Switch & Switch Heating Construct

3 Areas of Heat

1. Outside Switch Point Rail Heating
2. Inside Switch Point Heating
3. Switch Road Heating/ Pan

Kick-On Stainless Steel Clips



The Kick-On clip design provides a quick, non-invasive approach to Switch Point heater attachment to the rail. In addition to these benefits, it is made to last with a stainless steel composition vs. other more corrosive alloys.

Part Number Construct

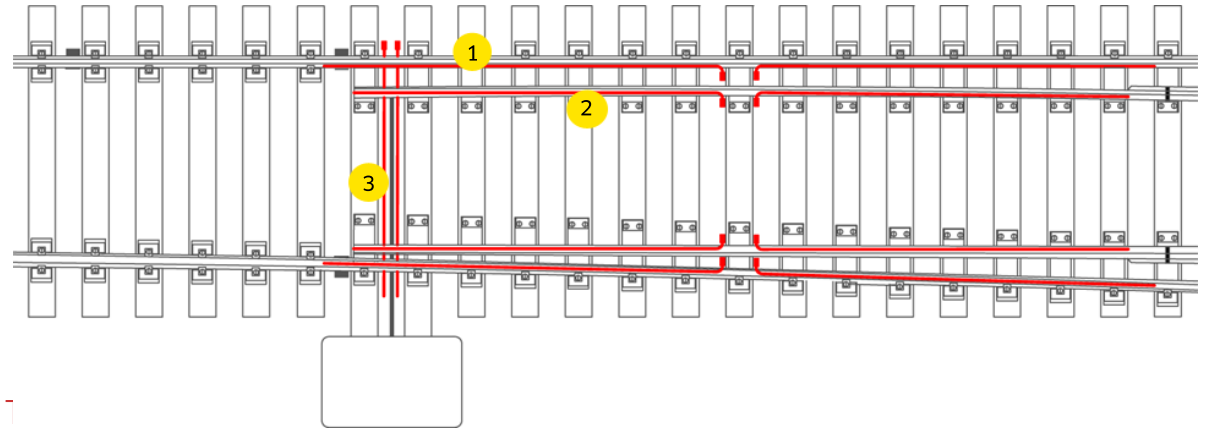
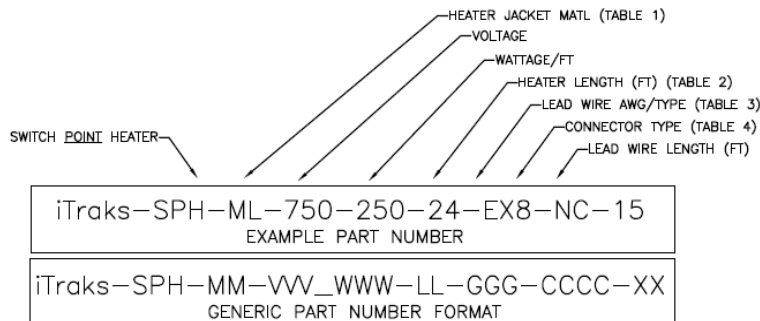


Illustration shows a 1:9 Radius 190 switch point

Technical Capabilities

Voltages:	40 to 750 V
Lead Cable Connection:	Permanently Molded
Lead Cable Type:	H07BQ-F, 8 AWG Exane, or as required by specification.
Lead Cable Length:	15 foot standar, or as required by specification
Protection Class:	IP67
Electrical Isolation:	>10 MΩ
Heating Element Length:	From 4ft. Up to 24ft.
Heating Element Dimensions:	0.52" x 0.20"
Power Termination:	OD: 1.0"
Power Termination Length:	3.0"
Power Termination Cold Zone:	6.0"
End Seal Cold Zone:	0.8"
Outer Jacket:	MONEL 400* or Stainless
*MONEL 400:	-Impervious to salt and most chemicals -Raises MTBF of heaters better than 30 years -10 year warranty

SAN [®]

Electro Heat

1 Main St. Whitinsville, MA 01588. Phone: +1 917-806-9650. www.niberailsolutions.com - info@niberailsolutions.com

